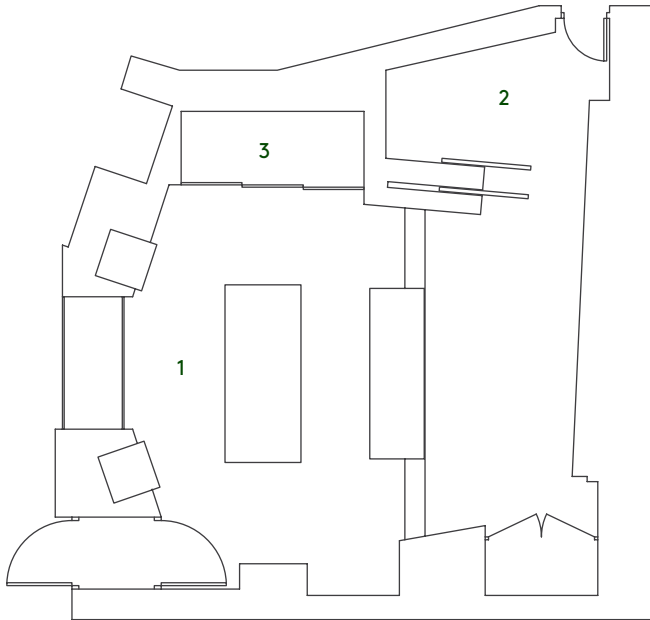


STUDIO C



AT METROPOLIS



- 1. Control Room 19m2
- 2. Overdub Booth 9m2
- 3. Machine Bay 3m2

Equipment

- SSL 6032 G-Series Console with CML ABC buses and Metropolis custom modifications.
- Malcolm Toft MPower PSU
- THD-Labs Tangerine Automation Interface
- Avid S1 Control Surface
- Pro Tools HDX2
- Logic X
- Prism ADA-8/ADA-8x Convertors (24 inputs and 56 outputs)
- PMC BB5/XBD Active Main Monitoring System
- Yamaha NS10
- Genelec 8351a
- Nearfield monitors (subject to availability): Unity Audio Rock, Focal Twin 6 BE, Adams S3X-H, ProAc Studio 100, Acoustic Energy AE22, Genelec 1031a, Auratone 5c
- Bryston and Quad Amplifiers
- Iconnectivity MioXL Midi Interface
- Overdub Booth
- Prism Maselec MLA-2 (x2)
- Tube Tech CL-1A
- Urei 1176 Silver Face (x3)
- GML 8200
- Prism Maselec MEA-2 (x2)
- Pultec EQH 2 (x2)
- Pultec MEQ 5 (x2)
- Summit EQ-F100 (x2)
- AMS RMX-16
- Bricasti M7
- EMT 244 Reverb
- Lexicon 224XL
- EMT Plate Reverbs (available on request)
- Pioneer SR202
- Roland DimD
- Roland SDE-3000
- Burl B2 Bomber
- Ensoniq DP/4+
- Roland Juno 106
- Arturia Matrix Brute
- Novation Peak
- Novation Bass Station 2
- Roland TR-8S
- Roland TB-03
- Roland TR-08
- Roland TR-09
- Moog Subsequent 37
- Rickenbacker 4003S Bass Guitar
- Upright Piano

Outboard Including

- Neve 1073 Classic
- Al Smart C1 Stereo Compressor
- DBX 160 Compressor (x2)
- Empirical Labs Distressors EL8-X (with British Mode) (x2)
- Neve 33609