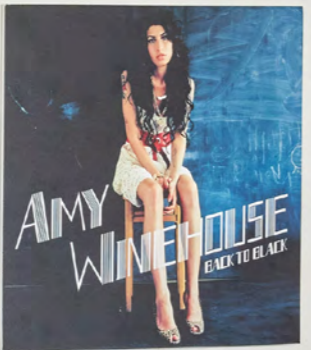
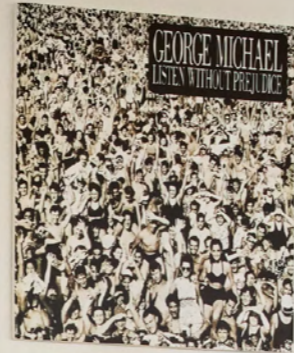




**METROPOLIS  
STUDIOS**  
LONDON





# Metropolis

Metropolis Studios is not simply a film location, it is Europe's largest purpose-built independent recording studio complex and one of the most culturally significant music production environments in the world.

For filmmakers, it offers something impossible to replicate on a backlot: a fully operational creative ecosystem with genuine artistic history embedded into every space.

For location scouts and production teams, the studio delivers a visually distinctive backdrop with premium technical infrastructure, flexible shoot spaces and immediate credibility within the entertainment world. Its mix of recording studios, performance spaces featuring both heritage and contemporary instruments and equipment, atmos rooms, green rooms, mezzanines and industrial architectural detailing makes it particularly suited to documentaries, music films, entertainment formats and behind-the-scenes productions.

The studio's on-screen portfolio is already well established. Most notably, Metropolis featured in *Back to Black*, the 2024 Amy Winehouse biopic directed by Sam Taylor-Johnson and written by Matt Greenhalgh, starring Marisa Abela in the title role. The film was shot in the very recording spaces where Amy Winehouse created much of her landmark album of the same name, offering an authentic backdrop to the story of one of Britain's most influential artists. More recently, the studio appeared in Netflix's six-part music docuseries *Simon Cowell: The Next Act*, produced by Box To Box Films in partnership with Syco Entertainment for Netflix.

A close-up photograph of a large, white, rectangular sign with the words "THE POWER HOUSE" in a bold, black, serif font. The sign is mounted on a building facade. Above the sign, there are decorative elements including a brick wall and a dark, circular object. Below the sign, there are ornate, classical-style architectural details in stone or wood. The overall scene is brightly lit, suggesting daytime.

# THE POWER HOUSE

Metropolis Studios is housed within the iconic Power House in Chiswick, a Grade II listed former electricity generating station dating back to 1901.

Originally built to power West London's tram network, the building was designed by renowned architect William Curtis Green in a striking Edwardian Baroque style and is widely regarded as one of London's finest surviving industrial landmarks.

Defined by vast arched windows, dramatic brick-and-stone façades, soaring internal volumes and ornate sculptural detailing, the building combines monumental industrial architecture with contemporary creative infrastructure.

The former turbine halls were transformed into expansive recording studios and production spaces in 1989, preserving the scale and atmosphere of the original structure while integrating state-of-the-art technical facilities.

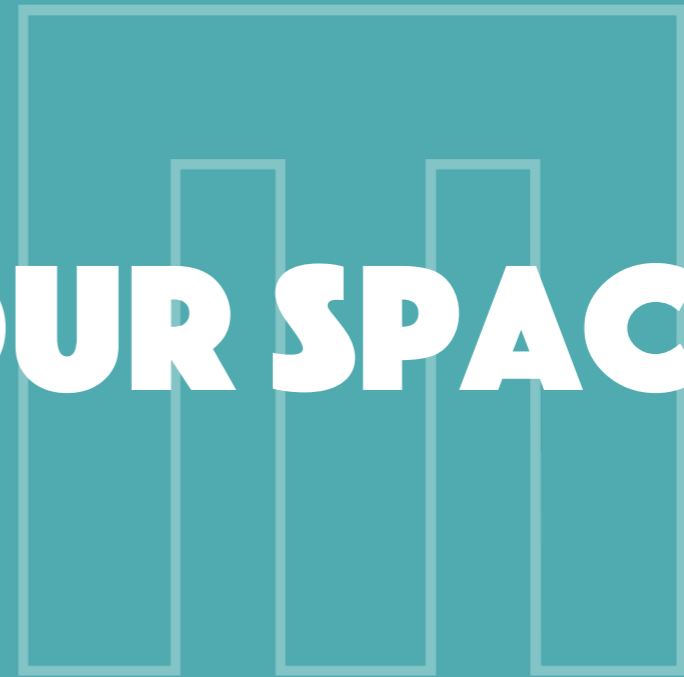
For location scouts, the appeal lies in the unique contrast the building offers: historic industrial character alongside modern recording environments; intimate artist spaces set against cathedral-scale interiors; and raw architectural texture paired with polished production capability. Exposed steelwork, elevated walkways, towering atriums and abundant natural daylight create a cinematic visual identity rarely found within a fully functioning creative venue.

Beyond its architecture, Metropolis carries enormous cultural cachet. Over the past three decades, artists including Adele, Elton John, Stormzy, The Verve, Queen, Rihanna, George Michael, Mark Ronson, Lady Gaga and Amy Winehouse have recorded, mixed or mastered work within the building.

That legacy gives productions immediate authenticity and visual credibility that cannot easily be recreated on a stage set. Unlike conventional studio spaces, Metropolis offers access to a genuine cultural landmark, place where globally recognised music continues to be created every day.



**OUR SPACES**





# STUDIO A

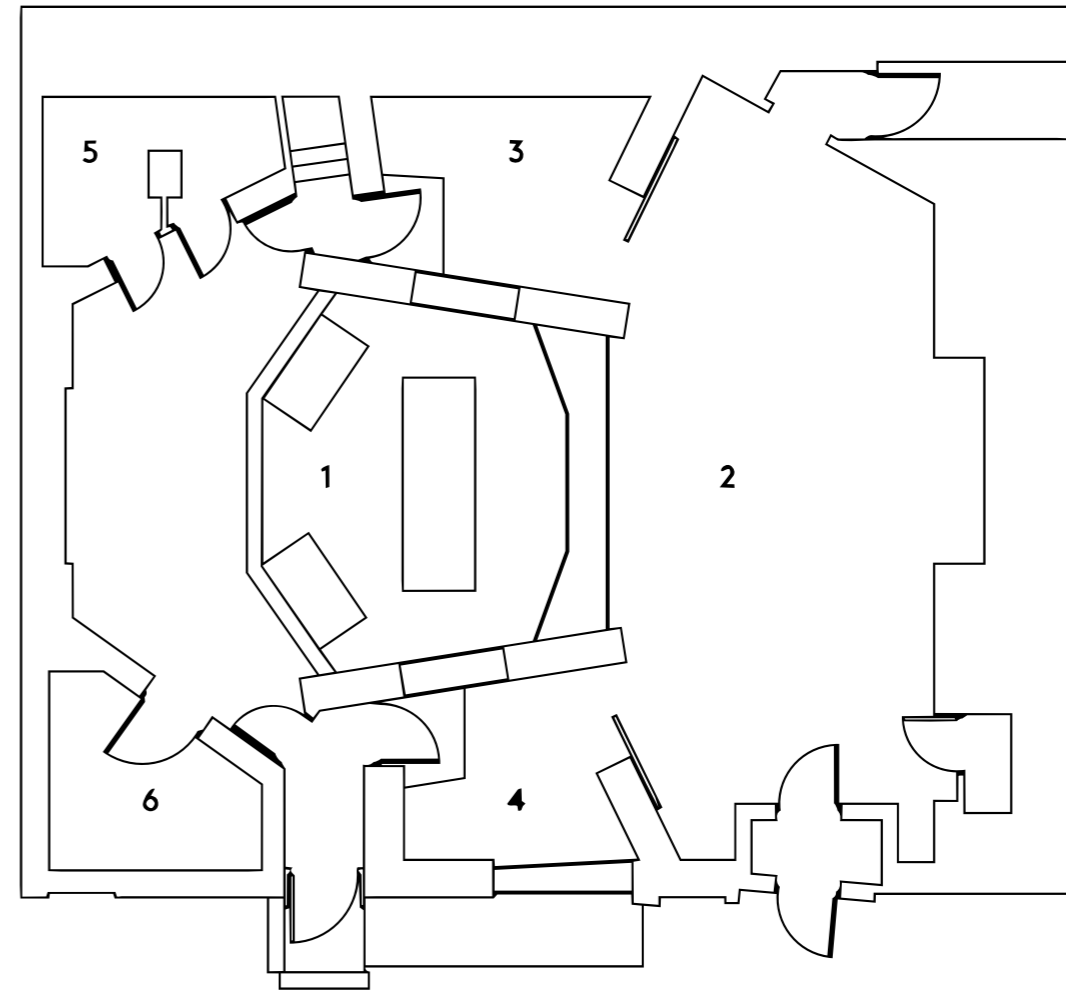
Studio A features a spacious 80m<sup>2</sup> square live room, complemented by a 5m<sup>2</sup> stone room and a 15m<sup>2</sup> dead room, all with ceilings exceeding 6m and excellent line of sight through floor-to-ceiling glass into the expansive 50m<sup>2</sup> control room.

The control room is built around an SSL 9072 "J" Series console, with dedicated machine and amp rooms, and is widely regarded as one of the finest control environments in the world. Each space benefits from abundant natural daylight, creating an exceptional working atmosphere throughout.

Completing the studio is a 50m<sup>2</sup> private lounge positioned above the control room, featuring a reception area with views overlooking all studio spaces below.



# STUDIO A DIMENSIONS



1	Control Room	55m <sup>2</sup>
2	Live Room	80m <sup>2</sup>
3	Dead Room	15m <sup>2</sup>
4	Stone Room	5/11m <sup>2</sup>
5	Machine Room	8m <sup>2</sup>



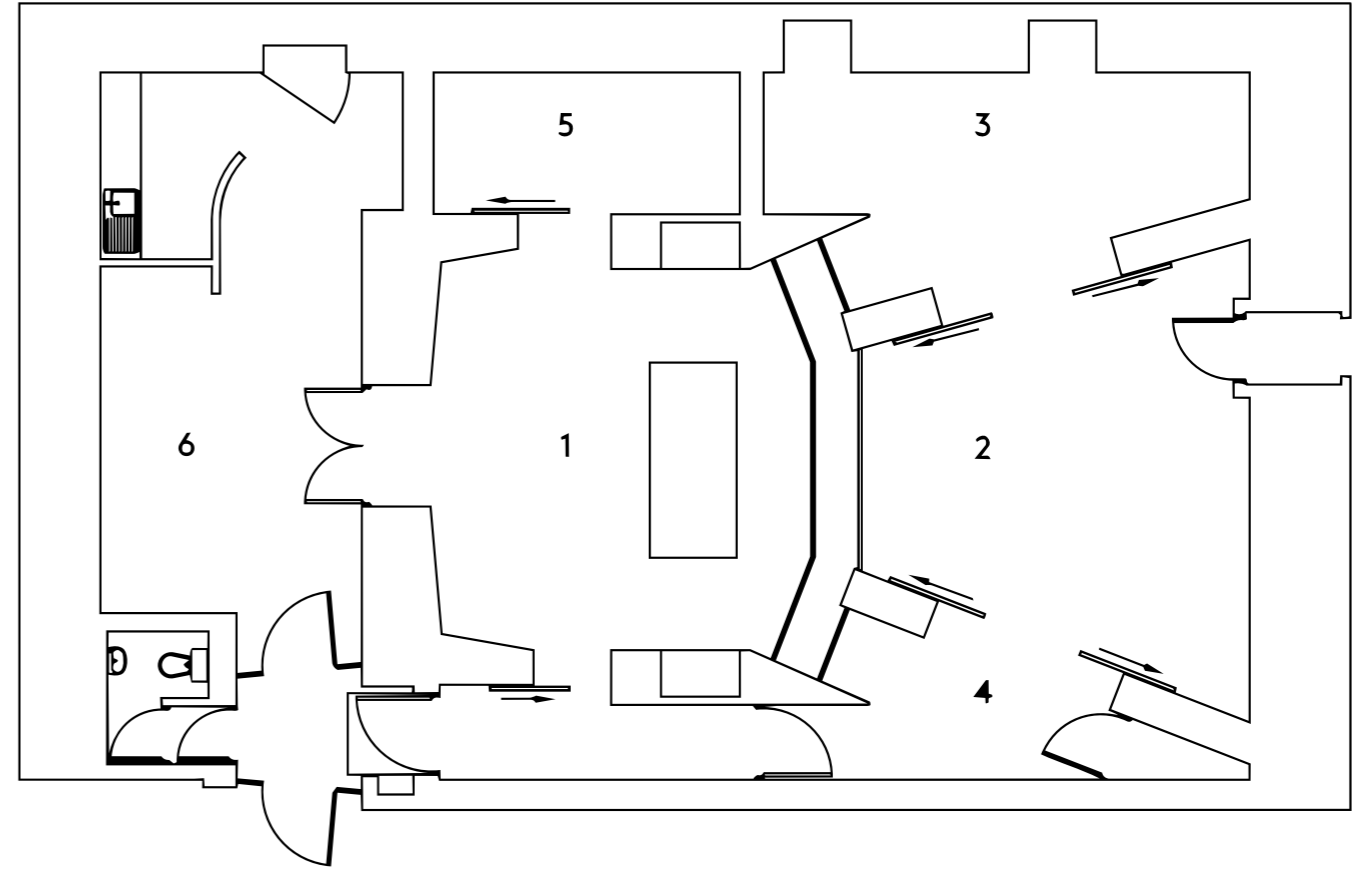
# STUDIO B

Studio B is centred around a classic SSL 4064 "G Series" console with Genelec main monitoring, offering a world-class control environment with a distinctly cinematic feel. The studio includes its own private lounge and bathroom facilities, with the lounge designed to seamlessly extend the control room via rear opening doors, ideal for production flexibility, client use, or on-camera flow between spaces.

The live area is highly versatile, comprising a central 26.5m<sup>2</sup> live room flanked by two acoustically controlled isolation spaces (20m<sup>2</sup> and 12m<sup>2</sup>), allowing for a range of recording configurations.



# STUDIO B DIMENSIONS



1	Control Room	32m <sup>2</sup>
2	Live Room	26.5m <sup>2</sup>
3	Acoustic Area	20m <sup>2</sup>
4	Acoustic Area	12m <sup>2</sup>
5	Machine Room	9m <sup>2</sup>
6	Recreation Area	31m <sup>2</sup>



# STUDIO C

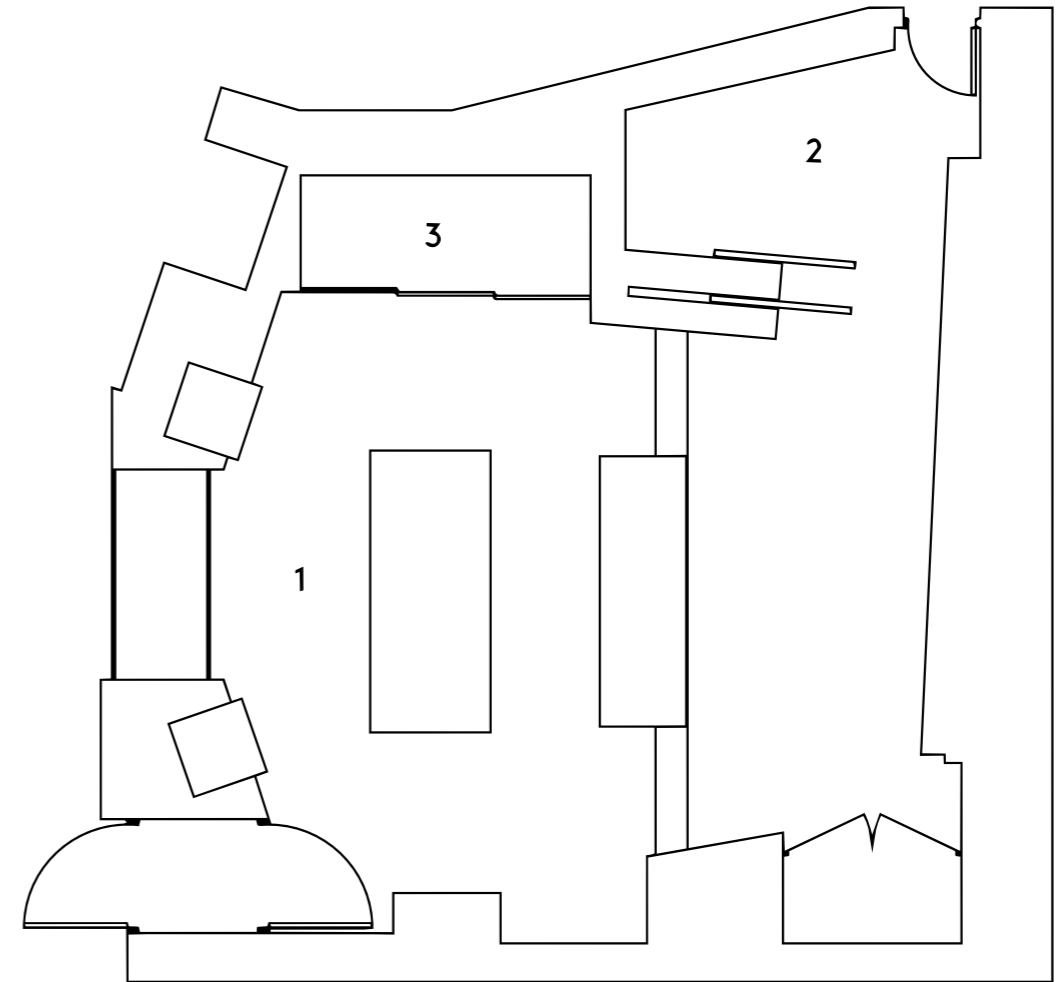
On the top floor at Metropolis, Studio C pairs 28m<sup>2</sup> of cinematic, daylight-flooded interiors with legendary musical pedigree. This striking space centres around a retro custom-styled SSL 6032 G-Series console, originally installed at Electric Lady Studio in New York, discovered in a warehouse in Wembley two years ago and lovingly brought back to life by our tech team.

The sleek, 18m<sup>2</sup> main control room is connected to a versatile 10m<sup>2</sup> overdub booth at the rear offering an authentic, high-end creative backdrop perfect for film, television, and commercials. Renowned as one of the capital's premier production environments, Studio C provides ample space for crew setup, props, or ancillary production equipment.

Combining architectural character with rich history, this exclusive space has played host to international icons including Adele, Amy Winehouse, Florence and the Machine, Lauren Hill, Raye, Little Simz, and Michael Kiwanuka.



# STUDIO C DIMENSIONS



1	Control Room	18m <sup>2</sup>
2	Overdub Booth	10m <sup>2</sup>
3	Machine Bay	3m <sup>2</sup>



# STUDIO E

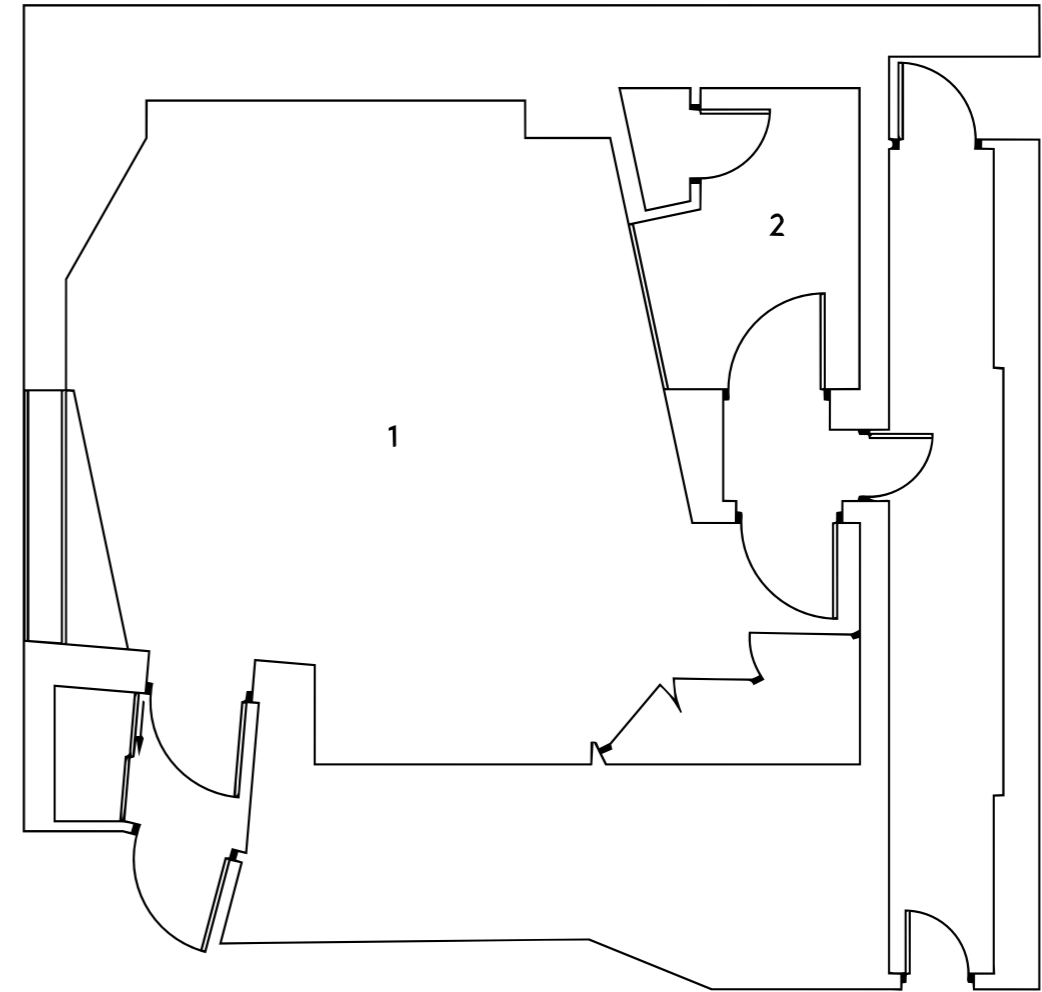
Also located on the top floor of Metropolis and boasting natural light, Studio E is a premium, top-tier 5.1 surround mix room designed to look as spectacular on camera as it sounds in production. At its visual and technical heart sits the massive, command-style SSL XL 9072 K Series console, framed by high-end PMC surround monitoring that gives the space an ultra-modern, high-tech aesthetic. The open floor plan provides clean sightlines and a high-tech backdrop for filming.

The intelligent architecture features a great-sounding overdub booth positioned with an exceptional, unobstructed line of sight straight to the console—ideal for capturing dramatic over-the-shoulder angles or interactive dialogue scenes between actors. While engineered as one of London's elite stereo mixing environments, the room's versatile layout easily accommodates large production crews, cameras, and equipment tracking.

This prestigious location comes with an undeniable star power, having served as the creative launchpad for legendary artists and global icons including Paul McCartney, Gorillaz, David Guetta, Zayn Malik, and Jessie J.



# STUDIO E DIMENSIONS



1	Control Room	19m <sup>2</sup>
2	Overdub Booth	9m <sup>2</sup>
3	Machine Bay	3m <sup>2</sup>



# ATMOS STUDIO

Launched in 2021, this state-of-the-art, Dolby-certified Atmos facility pairs cutting-edge tech with ultra-modern aesthetic. Built as a highly versatile & “hub studio”, with a mobile work-station, the adaptable space accommodates complex desk workflows, multi-camera setups, and live broadcast productions.

Visually, the room makes a bold statement with a striking, futuristic 11.2.8 speaker array offering immense production value and an authentic, high-tech backdrop for film, TV, and commercial shoots.

As one of the UK’s premier immersive audio environments, the studio provides the best immersive audio experience found anywhere in the UK and a camera-ready, premium setting that screams high-end industry innovation.





# STUDIO X

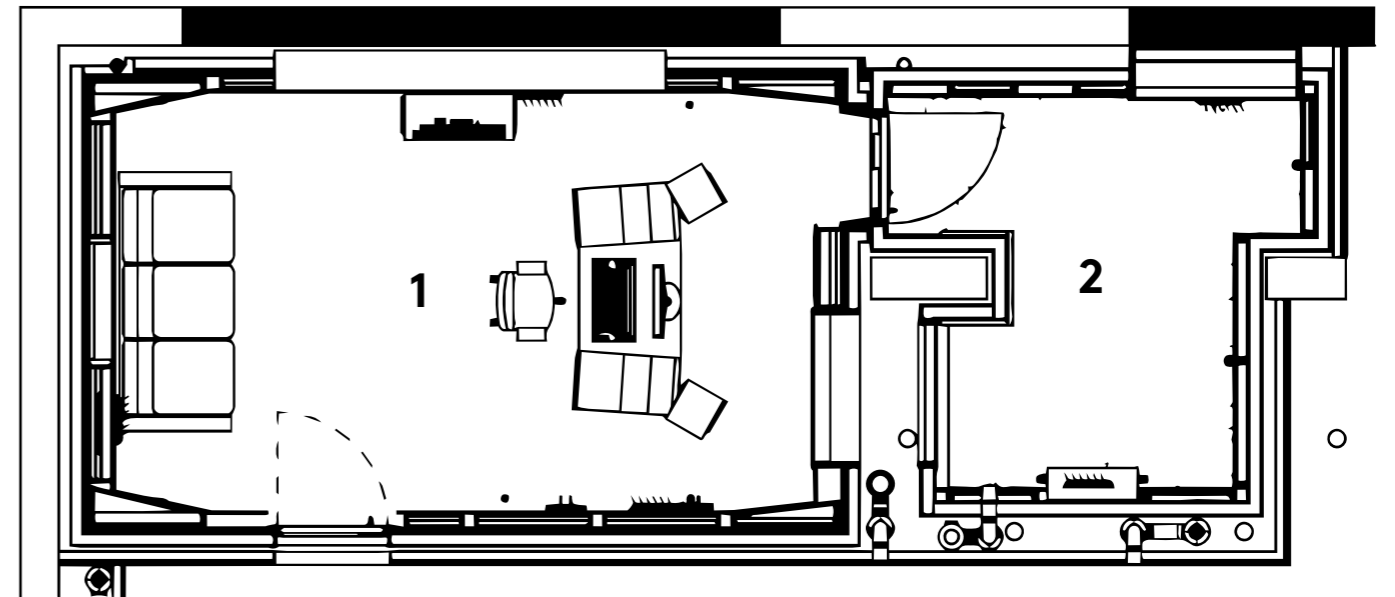
One of the latest additions to our portfolio of studios is Studio X, a luxuriously designed, multi-functional location balancing a clean modern aesthetic with rich visual character. Modelled on 70's basement.

Blending low-lit retro coziness with warm 1970's styling, the spacious 25m<sup>2</sup> Control Room connects to a separate 11m<sup>2</sup> Vocal Booth by glass panelling retaining some of the Grade II building's original features with a seamless flow. This dual-room configuration creates exceptional visual depth and clean sightlines, making it perfect for dynamic over-the-shoulder filming and performance-based scenes.

The space is anchored by a bespoke producer workstation and an impressive collection of instruments, including a classic vintage Wurlitzer 200A and a curated wall of electric and acoustic guitars that inject instant texture onto the screen. Combining technical sophistication with a highly flexible creative layout, Studio X offers an authentic, premium recording studio backdrop tailor-made for high-end film, and television projects.



# STUDIO X DIMENSIONS



1	Control Room	25m <sup>2</sup>
2	Vocal Booth	11m <sup>2</sup>



# BAR SPACE

The Power House bar and café serves as a versatile central hub within the building, combining an open industrial aesthetic with a functional production-friendly layout. Featuring high ceilings and expansive open-plan sight lines, the space is well suited for large-scale creative productions, with ample overhead clearance for lighting rigs, camera cranes, and elevated production equipment.

Beyond its visual appeal, the area also functions effectively as a production basecamp for crews and creative teams, offering flexible space for monitors, client viewing stations, technical setup areas, catering, and production coordination. Its adaptable layout allows the space to transition seamlessly between an active filming environment and a collaborative operational hub for larger productions.





# UNIT BASES

Unit base parking is available directly alongside Metropolis Studios, providing on-site access for production vehicles and equipment load-in. The adjacent area offers a secure solution for filming operations, supporting smooth logistics for both small and large-scale shoots.

In addition, there are multiple nearby options within close walking distance of the Power House in Chiswick, offering flexible overflow capacity for larger productions, unit bases and extended crew requirements.



Film: Back to Black (2024)



TV Series: Simon Cowell: The Next Act (2025)

# BRAND PARTNERS & PRODUCTIONS

We have collaborated with some of the world's most recognised entertainment, media and music brands, serving as a trusted creative partner for global productions.

Partners reflect the scale, cultural relevance and industry reach of productions already created within the building.





Film: Back to Black (2024)



# TESTIMONIALS

Having filmed 'Back to Black' at Metropolis Studios, the staff went above and beyond to facilitate the filming and accommodate new requests.

Films can be demanding, given the general footprint, crew size, schedule changes and especially when adding sound recordings to the mix; but the Metropolis team met the challenge head on, offering speedy solutions and were knowledgeable, personable and efficient in all the dealings I had with them. A pleasure to work with and a privilege to film a live recording in iconic Studio A.

**Rob Campbell-Bell**  
Supervising Location Manager



# THE LOCAL AREA

Chiswick offers a distinctive balance of connectivity, creativity and understated luxury, making it an ideal base for talent and production teams working with Metropolis Studios.

Located in West London, the area provides fast and convenient access to Heathrow Airport, allowing international talent and global collaborators to travel seamlessly between London and other key cities internationally. At the same time, Chiswick offers a more private and discreet environment than central London, refined, residential and low-profile, while still remaining closely connected to the capital's cultural and creative life.

The neighbourhood is known for its exceptional selection of independent cafés, acclaimed restaurants, boutique hotels and private members' clubs, creating a setting that naturally appeals to both creatives and senior industry executives. Destinations such as Soho House Chiswick embody the area's effortless blend of exclusivity and comfort, providing ideal spaces for informal meetings, networking and downtime between production.

Excellent road and underground connections into Soho, King's Cross, Mayfair and the West End allow talent, production teams and creative executives to move efficiently between set, production offices, meetings, and events.

For international film talent, production companies and creative partners, Chiswick represents a compelling alternative to traditional central London production districts, combining accessibility, discretion, comfort and creative credibility within one of London's most desirable and well-connected neighbourhoods.



# CONTACT

We welcome location scouts, producers and creative teams to arrange a private recce and explore the building, studios and production spaces in person.

To arrange a recce or discuss filming opportunities, please contact Gavin Newman [gavin.newman@thisismetropolis.com](mailto:gavin.newman@thisismetropolis.com)  
Phone number: 07941 026 114